

GENERAL NOTES:

ALL DRAWINGS TO BE READ IN CONJUNCTION WITH RELEVANT STRUCTURAL ENGINEERS DRAWINGS, WINDOW & DOOR SCHEDULES, M&E DRAWINGS, CONTAINER DATA SHEETS & PRODUCT DATA SHEETS.

PRINCIPAL ENTRANCE TO HAVE LEVEL THRESHOLD & CLEAR OPENING OF MIN. 775MM, DOOR TO BE FD30S FIRE RATED (FRAME & GLAZING - WHOLE UNIT) WITH SMOKE SEALS & SELF CLOSING DEVICE.

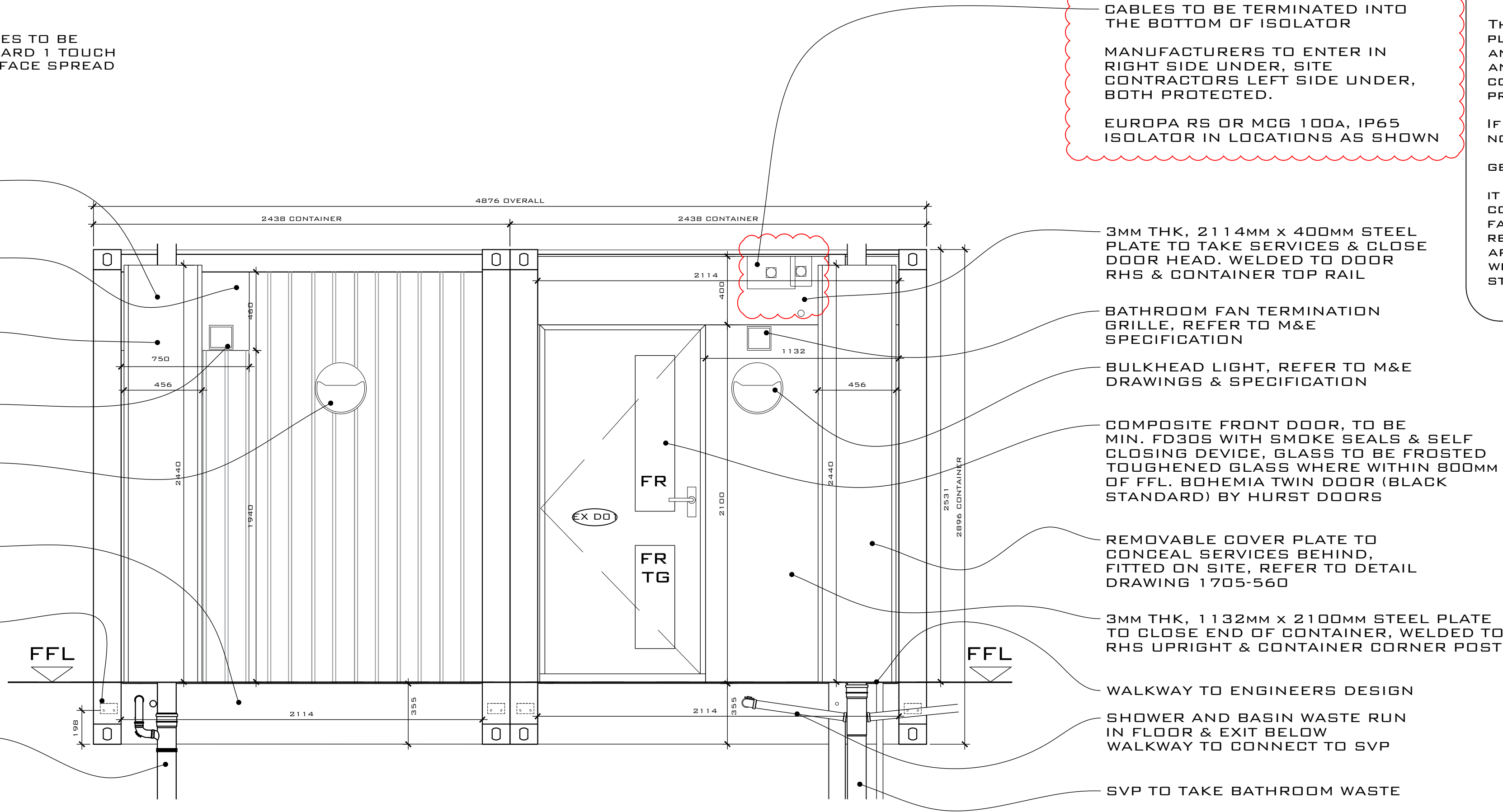
REFER TO M&E DRAWINGS FOR SETTING OUT HEIGHTS OF FITTINGS

ALL CONTAINERS & ALL STEEL COVER PLATES, & STEEL MOUNTING PLATES TO BE PAINTED EXTERNALLY ANTHRACITE GREY, RAL 7016 USING CONTAINERGARD 1 TOUCH UP PAINT, OIL BASED, MATT FINISH. ENSURE PAINT HAS A CLASS 0 SURFACE SPREAD OF FLAME.

ALL UNITS TO INCLUDE WINDOW & DOOR BLINDS.

FR = FROSTED GLASS
TG = TOUGHENED GLASS

- REMOVABLE COVER PLATE TO CONCEAL SERVICES BEHIND, FITTED ON SITE, REFER TO DETAIL DRAWING 1705-560
- 3MM THK, 460MM X 750MM STEEL PLATE TO TAKE SERVICES FIXED TO SHS FRAME
- 3MM THK, 450MM X 1940MM STEEL PLATE TO TAKE UNISTRUT IN SERVICE RISER HIDDEN BEHIND COVER PANEL
- KITCHEN FAN TERMINATION GRILLE, REFER TO M&E SPECIFICATION
- BULKHEAD LIGHT FIXED TO 3MM THK, 50MM X 300MM STEEL PLATE WELDED TO NEAREST OUTWARD TRAPEZOIDAL, REFER TO M&E DRAWINGS & SPECIFICATION
- 3MM THK, 355MM X 2114MM STEEL PLATE TO CLOSE CONTAINER BOTTOM & MITIGATE VERMIN/VANDALISM RISK
- 90MM X 60MM X 10MM THK PLATE WELDED TO CONTAINER CORNERS INTERNALLY WITH 2NO HOLES FOR BOLTS WITH 10MM CAPTIVE NUTS TO TAKE WALKWAY L BRACKET, REFER TO ENGINEERS DETAILS
- SVP TO TAKE KITCHEN WASTE



CABLES TO BE TERMINATED INTO THE BOTTOM OF ISOLATOR

MANUFACTURERS TO ENTER IN RIGHT SIDE UNDER, SITE CONTRACTORS LEFT SIDE UNDER, BOTH PROTECTED.

EUROPA RS OR MCG 100A, IP65 ISOLATOR IN LOCATIONS AS SHOWN

CDM 2015
RESIDUAL RISK

THR CONTRACTORS SHALL FAMILIARISE THEMSELVES WITH THE PROJECT AND EMPLOY SYSTEMS AND METHODS OF WORKING TO REDUCE ANY HAZARDS

THE CONTRACTORS SHALL PLAN, MANAGE, MONITOR AND COORDINATE HEALTH AND SAFETY DURING THE CONSTRUCTION PHASE OF A PROJECT

IF IN DOUBT ASK AND NOTIFY THE DESIGN TEAM

GENERAL

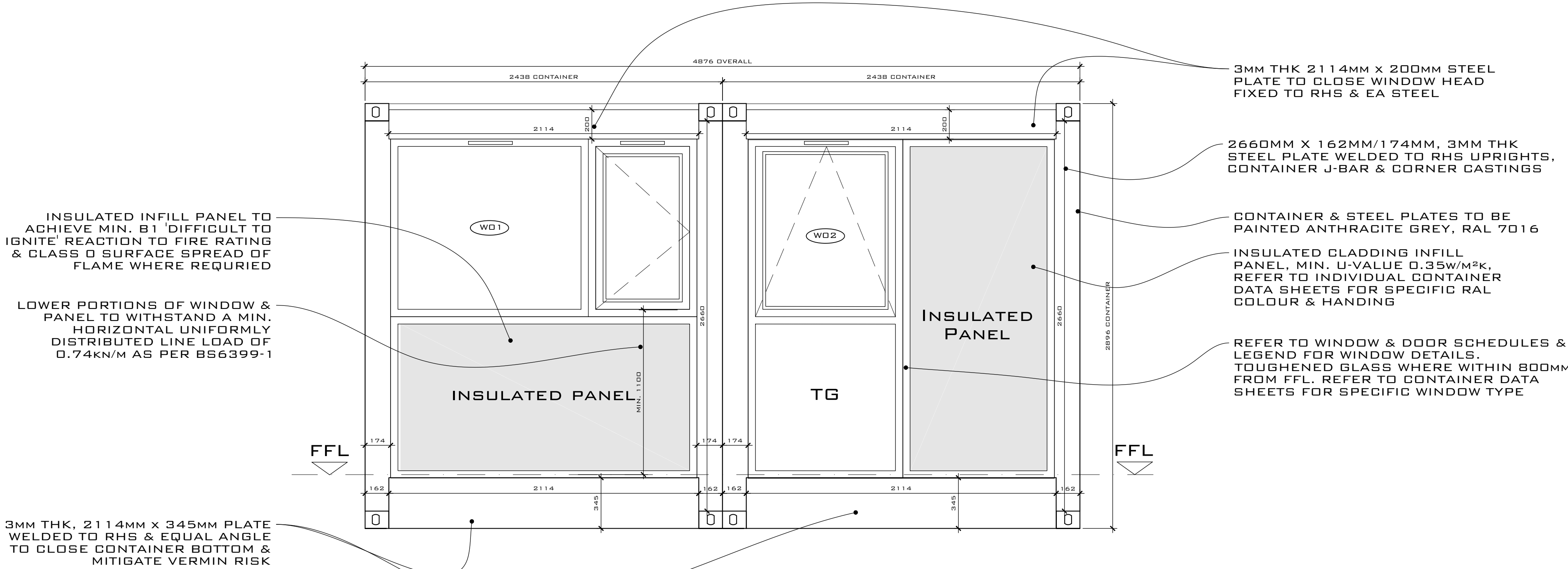
IT IS ASSUMED THAT A COMPETENT CONTRACTOR FAMILIAR WITH THE WORKS REQUIRED WILL BE APPOINTED AND THAT THEY WILL BE AWARE OF THE STANDARD HAZARDS.

NOTES:

- DRAWINGS SHOULD ONLY BE SCALED FOR PLANNING PURPOSES. DO NOT SCALE FROM THIS DRAWING FOR CONSTRUCTION PURPOSES.
- ALL DIMENSIONS ARE IN MM, UNLESS STATED OTHERWISE.
- ALL DIMENSIONS TO BE CHECKED ON SITE PRIOR TO CONSTRUCTION OR ORDERING.
- ANY ERRORS OR OMISSIONS TO BE NOTIFIED TO CITIZEN LLP IMMEDIATELY.
- CONTRACTOR TO READ & CHECK ALL MANUFACTURES LITERATURE AND IMPLEMENT ITS REQUIREMENTS PRIOR TO INSTALLATION OF ANY MATERIALS AND COMPONENTS.
- CITIZEN LIMITED IS NOT RESPONSIBLE FOR ANY BUILDING WORK THAT IS CARRIED OUT ON SITE.
- THIS DRAWING IS TO BE READ IN CONJUNCTION WITH ALL NECESSARY ARCHITECTURAL, STRUCTURAL AND SPECIALIST DRAWINGS, SPECIFICATIONS, SCOPES OF WORK & ROOM DATA SHEETS.
- ALL MATERIALS AND WORKMANSHIP SHALL CONFORM WITH THE RELEVANT BRITISH AND EUROPEAN STANDARD, SPECIFICATIONS AND CODES OF PRACTICE.
- IF IN ANY DOUBT, ASK.
- WALKWAY DESIGN BY OTHERS. FINAL WALKWAY JUNCTIONS TBC.
- CONTAINER DIMENSIONS CAN VARY. ALL DIMENSIONS SHOULD BE CHECKED BEFORE SITE INSTALLATION.

TYPE 2 - FRONT ELEVATION - HANDED

1:20 SCALE @ A1



3MM THK 2114MM X 200MM STEEL PLATE TO CLOSE WINDOW HEAD FIXED TO RHS & EA STEEL

2660MM X 162MM/174MM, 3MM THK STEEL PLATE WELDED TO RHS UPRIGHTS, CONTAINER J-BAR & CORNER CASTINGS

CONTAINER & STEEL PLATES TO BE PAINTED ANTHRACITE GREY, RAL 7016

INSULATED CLADDING INFILL PANEL, MIN. U-VALUE 0.35W/M²K, REFER TO INDIVIDUAL CONTAINER DATA SHEETS FOR SPECIFIC RAL COLOUR & HANDING

REFER TO WINDOW & DOOR SCHEDULES & LEGEND FOR WINDOW DETAILS. TOUGHENED GLASS WHERE WITHIN 800MM FROM FFL, REFER TO CONTAINER DATA SHEETS FOR SPECIFIC WINDOW TYPE

INSULATED INFILL PANEL TO ACHIEVE MIN. B1 'DIFFICULT TO IGNITE' REACTION TO FIRE RATING & CLASS 0 SURFACE SPREAD OF FLAME WHERE REQUIRED

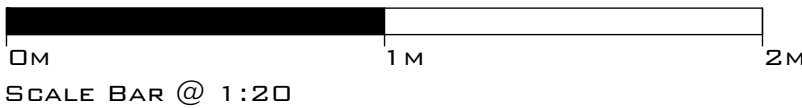
LOWER PORTIONS OF WINDOW & PANEL TO WITHSTAND A MIN. HORIZONTAL UNIFORMLY DISTRIBUTED LINE LOAD OF 0.74KN/M AS PER BS6399-1

3MM THK, 2114MM X 345MM PLATE WELDED TO RHS & EQUAL ANGLE TO CLOSE CONTAINER BOTTOM & MITIGATE VERMIN RISK

TYPE 2 - REAR ELEVATION - HANDED

1:20 SCALE @ A1

DRAWING SCALE 1:20 @ A1
DRAWING SCALE 1:40 @ A3



C	31.07.17	ADDITIONAL ISOLATOR CHOICE ADDED, ISOLATORS RELOCATED & NOTES ADDED TO MATCH MANUFACTURERS PREFERENCES	RS	JS	JS
B	17.07.17	WALKWAY SUPPORT REVISED IN LINE WITH ENGINEERS DETAILS	RS	JS	JS
A	06.07.17	WALKWAY SUPPORT REVISED IN LINE WITH ENGINEERS DETAILS & NOTES UPDATED	RS	JS	JS
REV	DATE	REVISION	DRAWN	CHECKED	APPROVED

COPYRIGHT CITIZEN LIMITED



CLIENT:
CARGOTEK

DESIGNER:
ROMAN SCHNECKER

PROJECT:
CARGOTEK 20FT PRODUCT

TITLE:
TYPE 2 TYPICAL FRONT & REAR ELEVATIONS - HANDED

SCALE: 1:20 @ A1
DATE: 27.06.17

PURPOSE OF DRAWING:
CONSTRUCTION

DRAWING: PROJECT REF - DRG NO. (REVISION)
1705-CR-H351 (C)